

Presidents Report

It was with great sadness that I notified club members of the death of David Langworthy. David passed away at home on Tuesday 7th November. David had been a member of Beaumaris Rotary since June 1992. Most recently David was our Fellowship Coordinator,



arranging such things as a Rail and Sail trip, a theatre outing to see Book of Mormon and a Bottle and Brush night. For a number of years David was an active member of our International Committee, visiting Sabu and arranging the installation of water treatment equipment and reporting on the activities on the island. He also served as Sargent for our first lady president.

David was a golfer and member at Kingswood Golf Club. Though not able to play of late he had been a regular player and was great company both on and off the course. David and his wife Sue have been inveterate travellers, often taking trips off the regular tourist routes. For example, there was the rail trip around Sri Lanka, a trip to Borneo and a cruise in a cargo ship around the Pacific.

The funeral service for David will be held at Le Pine Chapel, 21 McDonald Street, MORDIALLOC, VIC on Thursday, 16th November 2017 at 10:00 AM. Our thoughts are with Sue and the family.

The rest of the news in brief.

Thanks to everybody who helped at the Farmers Market on Saturday, great weather and a reasonable result.

DG Malcolm Chiverton and his wife Karen will be visiting us on 30th November. The meeting will have an "End Trachoma 2020 theme" and feature the resumption of our Art of Kakadu exhibition at Beaumaris Library. After some initial activity things seem to have gone quiet of late. Between the revenue from the artwork, the coin can and Heather's "Dollar Dog" (which has now collected over \$700 at various events and functions) we have raised a significant amount of \$\$\$ but I am not sure we know what to do with it.

Next Meetings

THURSDAY NOVEMBER 16

SPEAKER: CATHERINE KIRBY

TOPIC: KIDS LIKE US

CHAIR: VIVIENNE ZOPPOLATO

AV: DAVID HONE

CASH DESK:: JIM O'BRIEN & ROY DOWNES

THURSDAY NOVEMBER 23

SPEAKERS: JOHN SIME, JOHN MANKS

TOPIC: SABU UPDATE

CHAIR: JIM O'BRIEN

AV: DAVID LEA

CASH DESK: TRISH SMYTH & CHRIS MARTIN

THURSDAY NOVEMBER 30

SPEAKER: DISTRICT GOVERNOR, MALCOLM CHIVERTON

CHAIR: MARTIN FOTHERGILL

AV: ADRIAN CULSHAW

CASH DESK:: CHRIS WERNER & BRIDGET HAGE

TUESDAY DECEMBER 5

SPEAKER: NIKI EFSTRATIOU , BAYSIDE COUNCIL

TOPIC: YOUTH RESILIENCE SURVEY 2017 UPDATE

VENUE: MILANOS AT BRIGHTON BEACH

THURSDAY DECEMBER 7

NO MEETING

Unless stated otherwise venue is
Victoria Golf Club 6.30 for 7.00

Contents

1	Presidents Report
2/3	Notices
4	On to Conference Update
5/6	This Week's Speaker
7	Art of Kakadu Update
8	Concourse Christmas Carnival
9	Club Structure / Photo of Week

I will shortly be collecting numbers for our joint meeting with Hampton Rotary at Milanos at Brighton Beach on Tuesday 5th December. We will be able to pay on the night but I will need to give the Hampton people some numbers. The speaker will be Niki Efstratiou from Bay-side Council who will share the results of the Council's Youth Resilience Survey 2017.

We will be back at VGC on Thursday 14th December for our Christmas Dinner, which will feature a Kris Kringle. It will be a \$10 limit and all purchases should be from a local op-shop. When you make your purchase please bear in mind that recipients will know who has given them the gift! This will be the final meeting for 2017. We will start 2018

with a nine and dine on Wednesday 17th January at Woodlands Golf Club; details to follow.

Finally, there are no Beaumaris Rotary Club Anniversaries this week:

Yours in Rotary
Chris



Show Us Your Bottle!

We are collecting bottles of wine for the raffle at our 9th December Farmers Market. Every member is asked to donate a decent bottle of wine so we can put together a truly spectacular prize. This will be our raffle, all the proceeds going to help fund our various projects. Please hand over your bottle to Megan as soon as you can but certainly before the end of November.



Thank you.
Chris D'Arcy



Beaumaris Community Bank® Branch
32 East Concourse
Phone 9589 5366



Fifteen Beaumaris Rotary ladies (by my count), plus possibly the photographer, got together to celebrate the Spring Racing Carnival at the Brighton Baths.



We need your used stamps to help



*We're NOT asking for \$\$\$
- Just your used stamps!*

Collect used stamps from your Work, Schools, Universities, Hospitals, Medical Clinics, and Council Officesand don't forget your neighbours. *Remember every stamp helps!*



EndTrachoma by 2020
Rotary - Building Healthy Communities

Please send your used stamps to:

Rotarian Carrol Farmer
Apt. 423/1286, High St., Malvern. Vic. 3144



DISTRICT 9810 ANNUAL ROTARY CONFERENCE

HOME

SPEAKERS

ACCOMMODATION

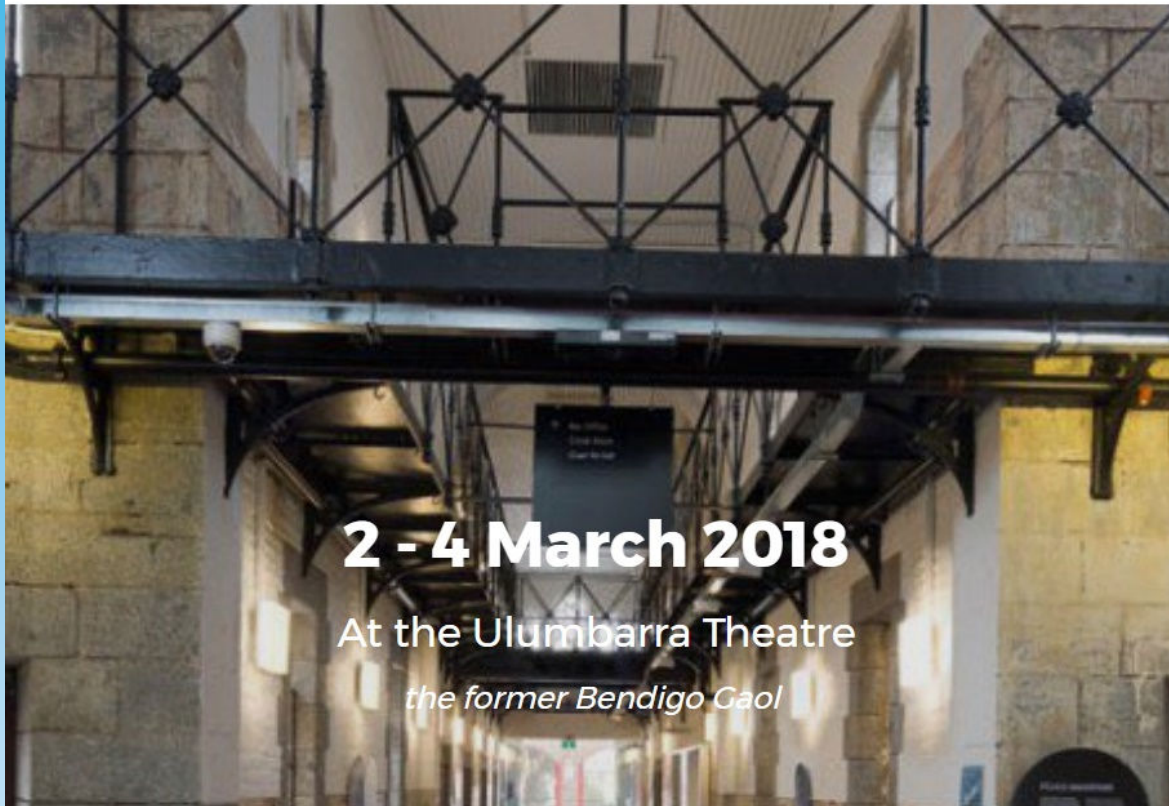
PROGRAM

GALA DINNER

REGISTRATION

VENUES

CONTACT



2 - 4 March 2018

At the Ulumbarra Theatre

the former Bendigo Gaol

On-to-Conference Update

Currently nearly thirty members and partners have indicated their intention to attend the conference in Bendigo. Whilst this is a great response, there will always be room for any latecomers. – please advise when you decide.

Based on the numbers above we have booked eighteen rooms at the Schaller Studio hotel and the club has paid a deposit on behalf of members. Final payment will be required thirty days ahead of the conference.

We have a starting list of around twelve for the pre-conference golf day on the Thursday prior to the conference. Again there is room for latecomers so let me know if you want to join us..

At last Thursday's meeting I circulated a list of ten attractions in the Bendigo region. I am including this below as you may find this useful in planning your trip to the conference.

Finally, I would appreciate it if you could let me know when you have registered for conference.

Ten Sights Worth Seeing in the Bendigo Area

- 1) The Talking Tram
- 2) Central Deborah Gold Mine
- 3) Bendigo Pottery
- 4) Dai Gum San (Chinese Precinct)
- 5) The Great Stupa (Buddhist Temple)
- 6) Bendigo Art Gallery
- 7) Maldon and Castlemaine
- 8) Heathcote Wineries
- 9) Lake Weeroon
- 10) Sacred Heart Cathedral

Malcolm Sawle
On-to-Conference Coordinator

This Week's Speaker: Tom Mulvaney
Topic: Family Life, Community Advocate Program

Tom Mulvaney is the Senior Manager of Practice at Family Life. Tom has a background in management of social services, case management, outdoor therapy, and psychology and is currently completing a Masters in Clinical Psychology. Tom supports the evaluation, provision and implementation of programs which promote family well-being as well as supporting strategy for social change. Family Life employs a trauma informed lens in the above work to support healthy childhood development through evidence informed and practical family interventions. Here is a summary of Tom's presentation. Community Advocate Program; A Trauma Informed Lens

Family Life's Journey

What we want to achieve = Community Centred Family Support Systems
 All services working with vulnerable families are challenged to respond to the impact of trauma, in order to bring about meaningful change.
 Volunteers (currently 341 volunteers)
 Building an organisational trauma informed culture

Family Violence

The Context in Victoria:
 1 in 4 Australian women experience intimate partner violence. 1 in 10 experience sexual violence.
 Over 76 000 incidents of FV in Vic over 2015/16. In 95% of cases men are perpetrators.
 Over 400,000 women in Australia had experienced violence by a partner during pregnancy (Cox, 2015).
 Close to 750,000 women had children in their care when their experienced violence by a former partner they lived with. More than three-quarters of these women (78%) said their children saw or heard the violence (Cox, 2015)
 The Coroners Court of Victoria identified 136 homicides that occurred within an intimate relationship between 2000 and 2010.
 The total (in 2015/16) cost of family violence in Victoria was \$5.3 billion.
 The cost to individuals and their families was \$2.6 billion. In 2016/17 Family Life provided a Family Violence focussed intervention for 853 families.
 Overall 3786 families received intensive support, impacting over 11500 individuals. The majority of these carry Family Violence as part of their complex history but this is

not always reported or captured.

Program impetus - The Trauma Journey

Most research links trauma to experience/s of stress or 'toxic stress' and/ or rupture which has had impact upon the brain/ brain development.

Experience of a traumatic event (rupture) without repair will contribute to future trauma cues (predisposition to trauma) and precipitate reduction in current wellbeing.

Theoretical background - Neuroplasticity

No matter what a child's early experiences, there is a capacity for repair.
 Earlier opportunities for intervention create better outcomes for "re-wiring".
 Key to support repair are the concepts of Nurture and Structure.
 Nurture represents all the good, loving, giving, playing and sharing that caregivers can provide through parent - child interactions.
 Structure refers to consistent, predictable, stable caregiving that creates healthy "Firing and wiring" opportunities for children's neurobiological systems.

Theoretical background - Repair and Resilience

Extensive international research in countries that have experienced high levels of trauma demonstrate that individual repair occurs best when supported through community connections.
 Children rely on caregivers and communities to provide a secure base for children to feel safe, worthy, healthily dependent and to have their needs met.

How can communities heal trauma?

Capable communities can:
 Identify vulnerability earlier than traditional models of child protection.
 Provide spaces for low risk intake spaces e.g. op shops
 Create spaces of visibility for vulnerable children and families, on the periphery of mainstream services.
 As risk levels escalate and de-escalate they can monitor changes and support families.
 Be packaged as part of visibility plans for children and families.



Operate as soft entrance and exit points for vulnerable families, into and out of traditional welfare systems.
Create a sense of “felt security” for vulnerable families and children.

What is Creating capable communities?

Family Life’s Creating Capable Communities was established in 1998 and is a trauma informed, family and community strengthening program to support the most vulnerable families in our community.

Aims to repair the impact of trauma, by creating connections through safe, stable neighbourhood spaces for vulnerable families and children to overcome isolation and experience felt security.

Family Life staff and volunteers work together with communities to build confidence and capacity with the aim of embedding longer-term change.

Family Life staff work with community to build sustainable supportive systems around individuals.

Trauma informed communities

Family Violence:

FV is highly traumatic in itself, but repair experiences are often inhibited by the instability and disconnect that occurs in the greater community system.

Perpetrators actively disconnect victims from community as a means of isolation and control.

Women and children exiting the home and entering alternate accommodation are forced to leave their network of support for safety.

Low self esteem, confidence and social skills make it challenging for women and children to reintegrate.

Community Advocate Program(CAP)

What will the CAP do?

Develop a trauma informed family violence training program for volunteers - we will use focus groups to inform this.

Leverage and coach Family Life’s strong volunteer workforce to respond to attitudes which promote violence and to offer support to their communities.

Capitalise on Op Shops as an opportune location for engagement with broader community - develop marketing content.

Pilot a family violence wallet resource for advocates (ie. referral options, managing disclosures, responding to/ starting a conversation).

Explore through a pilot other resources and practices to support the advocacy program and then scale this.

Contacts and Links

Tom Mulvaney

Senior Manager

Family Life

T +61 3 8599 5433

tmulvaney@familylife.com.au | www.familylife.com.au

<https://familylife.com.au/>

<https://www.facebook.com/familylifeau/>

<https://twitter.com/familylifeAU>

<https://www.youtube.com/watch?v=y0ywdkrHcpw>

A New Friend of Beaumaris Rotary

Here is a self explanatory message from an overseas Rotarian who will be joining us for some of our meetings down the track.

Greetings to Beaumaris Rotarians! Thanks for sending this "In Gear" to me. I made contact recently as I was planning to be in Melbourne before Christmas, but now have a date for hip surgery in December, so that comes first. Please keep me on your mailing list though.

Our Rotary Club, Bangor Gwynedd, meets in Menai Bridge, just along the coast from Beaumaris, Anglesey. I'm happy to do some research to see if the name link is understood, or do any of you already know how it came about? I am happy to bring along photos and stories etc from Beaumaris, but again, perhaps you have had other members or visiting Rotarians who have visited our Beaumaris and shared stories in the past. Y

our banner was on display at our Charter Night, which gave me the idea to link with your club and join your meetings while I am with my daughter who now lives in Brunswick West. I joined Rotary when we were living in Monbulk, then on coming back to Wales, I decided to transfer my membership to Bangor Rotary.

So, I envy your warm weather and spring flowers, here it is getting cold and the migrating birds have all flown, as I should have done as well!

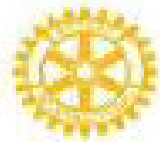
Best regards from Wales, Cofion gorau o Ogledd Cymru!

Liz Millman



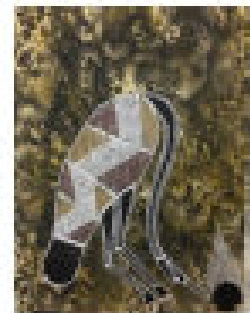
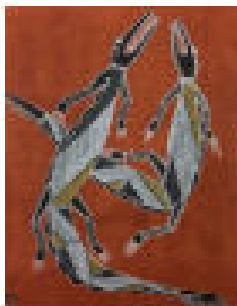
Kakadu
Crocodile Hotel

Beaumaris
Rotary



Proudly present an exhibition of original indigenous art

The Art of Kakadu



The art will be exhibited at;

Beaumaris Library - Saturday November 25 to Saturday December 30

All art comes with a profile of the artist and a Certificate of Authenticity

Proceeds from this exhibition will be donated to local causes including the Sandringham Hospital, Melbourne Indigenous Transition School and to assist with the eradication of Trachoma in Indigenous children.

What does Australia have
that the other developed
nations of the world don't?

Trachoma.

It's not where you think it is.



Trachoma is an eye disease
that is still endemic in
Australia.

For further information please contact:
Robert McArthur – Beaumaris Rotary
0400 121 469 or robmcArthur@bigpond.com

The combined efforts of
Rotary Clubs in Australia
will make the eradication
of Trachoma happen..

CONCOURSE CHRISTMAS CARNIVAL



FRIDAY 24TH NOVEMBER
5PM TILL DUSK

PHIL PARA BAND (LIVE)

KIDS RIDES \$2.00 EACH - \$10 WRISTBANDS **VISIT FROM SANTA**

BEAUMARIS PRIMARY SCHOOL GLEE CLUB **VOICES POP CHOIR**

BETH GEORGE

FANTASTIC RAFFLE

FAMILY EVENT

CHRISTMAS TREE LIGHTING

OUR MAJOR SPONSOR

Proud sponsor

Beaumaris Community Bank Branch - Seaford Bank

12 East Concourse, Beaumaris
Phone 8589 5266



Concourse Shopping Centre, Reserve Road, Beaumaris

RCOB Club Structure 2017 - 2018

RCOB Board.

President.	Chris D’Arcy
President Elect.	Heather Chisholm
Hon Secretary.	James Glenwright
Hon Treasurer.	Richard Jones
Projects Director.	Roy Seager
Immediate PP.	Malcolm Sawle
Independent Director.	Vivienne Zoppolato

International. John Sime (Chair)

Fred Hofmann	John Manks
Ken Mirams	Ross Philips
Robert McArthur	Clem Quick

Youth. Chris Martin (Chair)

Jan Cooper	Lois Lindsay
Tony McKenna	David Rushworth
Vivienne Zoppolato	Bridget Hage

Event Management.

Jim O’Brien	Martin Fothergill
Robert McArthur	Geoff Stringer

District Service.

Youth Services.	Tony McKenna
Membership.	Trish Smyth
Assistant Governor.	Ken Mirams

Club Service & Administration.

Attendance & Dining.	Heather Chisholm
Foundation.	John Manks
Program.	Lynda Douch
Membership.	Adrian Culshaw
Fellowship.	Megan Glenwright
Auditor.	Tony Phillips
Club Protection Officer.	Ken Mirams
Communications.	David Lea
Social Media.	Kerry, Lynda & Trish
Archivist.	John Beaty
Almoners.	Lois Lindsay, Charmaine Jansz
Marketing & PR	Peter Flude
Club Photographer.	Max Darby

Community. Chris Werner (Chair)

Mary Cunnington	Max Darby
Martin Fothergill	Kerry Geard
David Langworthy	Tony Phillips
Mary Sealey	John Beaty
Richard Shermom	Roy Downes

Market Management.

Vivienne Zoppolato (co-ordinator)	
Heather Chisolm	Ken Mirams
Greg Every	Peter Flude

Indigenous.

David Hone (Chair)
Heather D’Arcy (Trachoma)

Friends and Anemones

A clownfish hides within a sea anemone in the waters off Indonesia. clownfish always make their homes in anemones, and the species share a mutually beneficial, or symbiotic, relationship. the anemone's stinging tentacles ward off fish that predate on clownfish. in return, the clownfish clean the anemone, and its waste provides nutrients for the anemone.

Photograph by Gregory Piper, National Geographic

